

ON 27 SEPTEMBER 2023  
DWAS WILL BE HOSTING IN THE NETHERLANDS:




# ASCA FARMTRIALS

## PROGRAM AND JUDGES:

### September 27

AM Farmtrial mix, judge: Anneke de Jong  
PM Farmtrial Cattle, judge: Anneke de Jong

ASCA Sanctioning Pending All ASCA Show Rules & Regulations apply

Please check our website and facebook regularly for updates!  
[www.dwas.nl](http://www.dwas.nl) /  DWAS Australian Shepherd Club at Facebook

## TRIAL INFORMATION

<b>Handlers meeting</b>	starts at 8.00 AM
<b>Coursedirector</b>	Jos van der Meer <a href="mailto:vicepresident@dwas.nl">vicepresident@dwas.nl</a>
<b>Trial secretary</b>	Lenie Henrion Verpoorten <a href="mailto:admio@admio.nl">admio@admio.nl</a>
<b>Classes Available:</b>	Farmtrials: Open, Advanced
<b>Costs Farmtrials:</b>	Pre entry                      Day of show ( if available )
Cattle	€ 45,00/class                  € 45,00--
Mix	€ 55,00/class                  € 55,00--

### Herding Specifications:

The trials are open to aussies and all ASCA approved herding breeds.

Ducks: mixed Kakhi, Runners 5 head per run  
 Sheep: mix Barbados Black Belly/ Maasduiner 5 head per run  
 Cattle : Holstein, 5 head per run

### The trials will consist of:

mix: 16 runs, Cattle: 12 runs

Replacement fee ducks; euro 20,00  
 Replacement fee sheep ; euro 250,00  
 Replacement fee Cattle; Market value

### Note:

In order to have ASCA qualifying legs tracked and to receive ASCA title certificates, each non-ASCA-registered dog will be required to have an ASCA Tracking Number. For Tracking Numbers and Service Membership Application, see ASCA website:  
[ASCA Rules and Forms](#).

## ENTRY'S

**E-Mail completed Stock entryforms to:**  
Lenie Henrion Verpoorten: [admio@admio.nl](mailto:admio@admio.nl)

**all forms must be completed digitally and sent as a PDF.**  
**photos of prints are not accepted**

**Take the original with signature with you and hand it in before the start of the trial!**

Sent prove of payment with the entryform. Entry only accepted when form and payment are in

*Correspondence only via Email,  
NOT via social media like Facebook, WhatsApp etc.*

**Entry's will be taken starting August 10 - 12:00 o'clock( noon)**

No entry's accepted before August 10

**Entry's end September 26 12:00 o'clock**

### **Runningorder:**

The running orders will be drawn on the day of show  
The running orders will be announced on the morning of the trial,  
before the start of the handlers meeting.

When too many entries with the same time and the transferred fee, we will do a random draw for entries

### **Payments:**

Please make sure you specify your payment(s) as much as possible (name handler (if different than the person making the payment), name dog.

Bank account nr. NL30 RABO 0301 2458 19 - DWAS - Hoornsterzwaag.

For international entries, please use NL30 RABO 0301 2458 19 BIC: RABONL2U

You can also transfer to Paypal.

**Make sure you pay for the extra charges!**

## FOOD AND DRINKS

Coffee and Tea are free for everyone.

Bring your own lunch,  
for dinner something is arranged every day, prices depend on the menu

**please let us know if you want to stay for dinner when you enter. Also if you are vegetarian or have food allergies**

## **DIRECTIONS TO THE JJ RANCH**

Schoterlandseweg 42 - Hoornsterzwaag

From Arnhem (A12) take A50 to Zwolle. Then A28 towards Groningen / Meppel. Then A32 towards Meppel / Leeuwarden. Exit Wolvega N351 towards Oosterwolde. First roundabout take left (N353) to Oldeberkoop. Next roundabout take a right towards Gorredijk. (N380). At the curve keep going straight towards Jubbega. After 5 km you come to Hoornsterzwaag.  
The JJ Ranch is at nr. 42 on your right.

## **WHERE TO STAY**

<b>Hotels:</b>	- Hotel 'Lunia' - Oldeberkoop
<b>Holiday homes</b>	Easterwood - Makkinga
<b>Camp sites</b>	<ul style="list-style-type: none"><li>- Camping 'De Koppenjan' - Jubbega *</li><li>- Minicamping 'Singel' - Jubbega</li><li>- Minicamping 'De oude trambrug' - Donkerbroek</li><li>- Minibospark Jubbega - Jubbega</li><li>- Camping 'Wilhelminahoeve' - Elsloo *</li></ul> <i>* dogs allowed on the camp site not in the holiday homes</i>
<b>Bed &amp; Breakfast</b>	B&B 't Lytse hûske, Gorredijk

**Camping on the JJ-ranch grounds only for DWAS-members and volunteers**

## **VETERINARIANS**

The vets on call are:

<b>Dierenartsencombinatie Gorredijk</b>	De Klok 22 8401 CM GORREDIJK 0513-46 33 13
<b>Dierenartsencentrum Oosterwolde</b>	Venekoterweg 40 8431 HH Oosterwolde 0516-51 27 42

## GENERAL ENTRY INFORMATION

DWAS and JJRanch assume no responsibility for any loss, damage, or injury sustained by an exhibitor, handler, dog, property, child or spectator.

- Draw will be posted prior to start of trial.
- Bitches in season will run in draw order.
- Bitches in season will remain crated or in the car when not competing.  
Please consider the other contestants dogs.
- All dogs must be on leash or crated when not competing.
- Changes and/or substitutions, must be submitted to the trial secretary in writing the evening before the trial.
- Move-ups are allowed, but they may not be recorded correctly unless written notification is provided to the trial secretary prior to the start of the trial.
- Any change requests, including substitutions, must be submitted to the trial secretary in writing the evening before the trial.

Entry fees will be refunded:

- When a dog has been certified by a licensed veterinarian as unable to compete due to sickness or injury. Owner will be responsible for all vet fees.
  - When the trial has to be cancelled
- When you or your familymembers have cold symptoms or flue or are tested positive for the corona virus
- Run limits and judging assignments are subject to change.
- Selling runs will not be permitted. If the trial is full and you wish to sell a run, the transaction must be handled by the trial secretary, who can ask the coursedirector to handle it. All offers to buy or sell runs must be submitted in writing.

### **Please clean up after your dogs.**

This trial is being held on private property. You understand by your attendance and/or entry that the Show/Trial Committee and Hosts have the right to refuse or excuse any entry or spectator for good cause. Good cause would be violation of the private property owners' rights or violation of the ASCA show rules. For the safety of your dogs and others all dogs must have current vaccinations.

This county has a leash law. Dogs are not allowed to be let of leash anywhere.  
Please consider the wildlife, farmers fields, and other stock.

**General Information:** [Mail to DWAS](#)

## FARMTRIAL AWARDS:

Ribbons awarded for 1st through 4th place.

Ribbon High Combined

Ribbon for High in Trial

High combined award will be the scores of 3 livestock combined both Q and Non Q

Ribbons awarded for 1<sup>st</sup> through 4th place.

Qualifying ribbons for qualifying scores.

## DWAS YEAR END AWARDS:

These trials will count toward the DWAS year end farmtrial awards.

Highest combined score of 2 trials with 2 different judges of 2023

Calculations as follows:

- The highest score wins ( i.e  $324 + 326 = 650$  is higher than  $325 + 325 = 650$ )
  - The highest cattle score
  - The highest sheep score
  - The highest duckscore
  - Pulling a name out of a hat.

(Aussies eligible have registration numbers starting with E,N,F or I)

### Data Protection:

Due to the GDPR (General Data Protection Regulation), each DWAS member and each trial participant must agree to the processing of his personal data. This approval is to be granted once and serves to ensure the fulfillment of the objectives of the DWAS.

The completed (pdf with text entry) and signed statement is, if not yet submitted in a previous trial, to be added to the trial entry, see <http://www.dwas.nl/de-club.html>

You enter this trial on your own risk.

DWAS reserves the right to cancel all or part of the activities at all times.

# COURSE FARMTRIAL MIX SEPTEMBER 27 – JUDGE ANNEKE DE JONG

- **Duckwork:**

Penwork 1 : 5 points

Take 5 head of ducks out of the takepen, settle against the back fence.

**Gather : 20 points**

Open handlers : Take dog with you to the top of the arena. Pole is set at 75 feet.

Open : Handler may move ½ way between dog and stock ( marked with a cone)

Advanced : Handler remains at the pole.

Put ducks into the holdingarea.

**Specific task 1: 20 points**

Open handlers have the option either L side or R side of holding area. Advanced handlers must put stock into the L side.

Open handlers can move directly to the chute after the hold.

Advanced : Let the dog hold the ducks into holding area, while handler moves to the chute.

**Chutework 20 points:**

Take ducks trough “Footbath”.

Open class : gate will be open

Advanced class : gate will be closed

**Penwork 2 : 5 points**

Repen ducks in takepen, open gate to alleyway, put ducks in the alleyway, then leave the takepen.

- **Sheepwork:**

**Sorting 25 points :**

Enter the square pen trough the takepen

5 head of sheep are in the Square pen

Sort 3 marked sheep.

Open handlers put sheep in pen 1.

Advanced handlers put sheep in pen 2.

**Penwork 3 : 10 points**

Let the dog bring the stock out of the holdingpen back to the SP

Open handlers can go with the dog.

Advanced dogs : dog should work primarily on its own.

**Specific task 2: 20 points:**

Take stock out of SP and put them in the chute from the bottom side up. Advanced handlers drive from the cone, Open handlers can fetch them in. Hold till the judge calls the hold. Let them back out and take them through gate " G "into the Squarepen.

**Penwork 4: 5 points:**

Take stock through the alleyway ( Gate C ) open gate to return to holdingpens. Close the gate of the holdingpen.

Time ends when the squarepen gate is closed

Time allotted 19 minutes

3 minute warning at 16 minutes.

Ties are broken by :

Score on sorting

Score on gather

Score on chutework.

Size of HP 12 x 12 ft

Size of AW : entrance 9 ft wide, exit 3 ft wide. Total length 20ft.

Size of holdingpens 1 & 2 : 9 x 15ft.

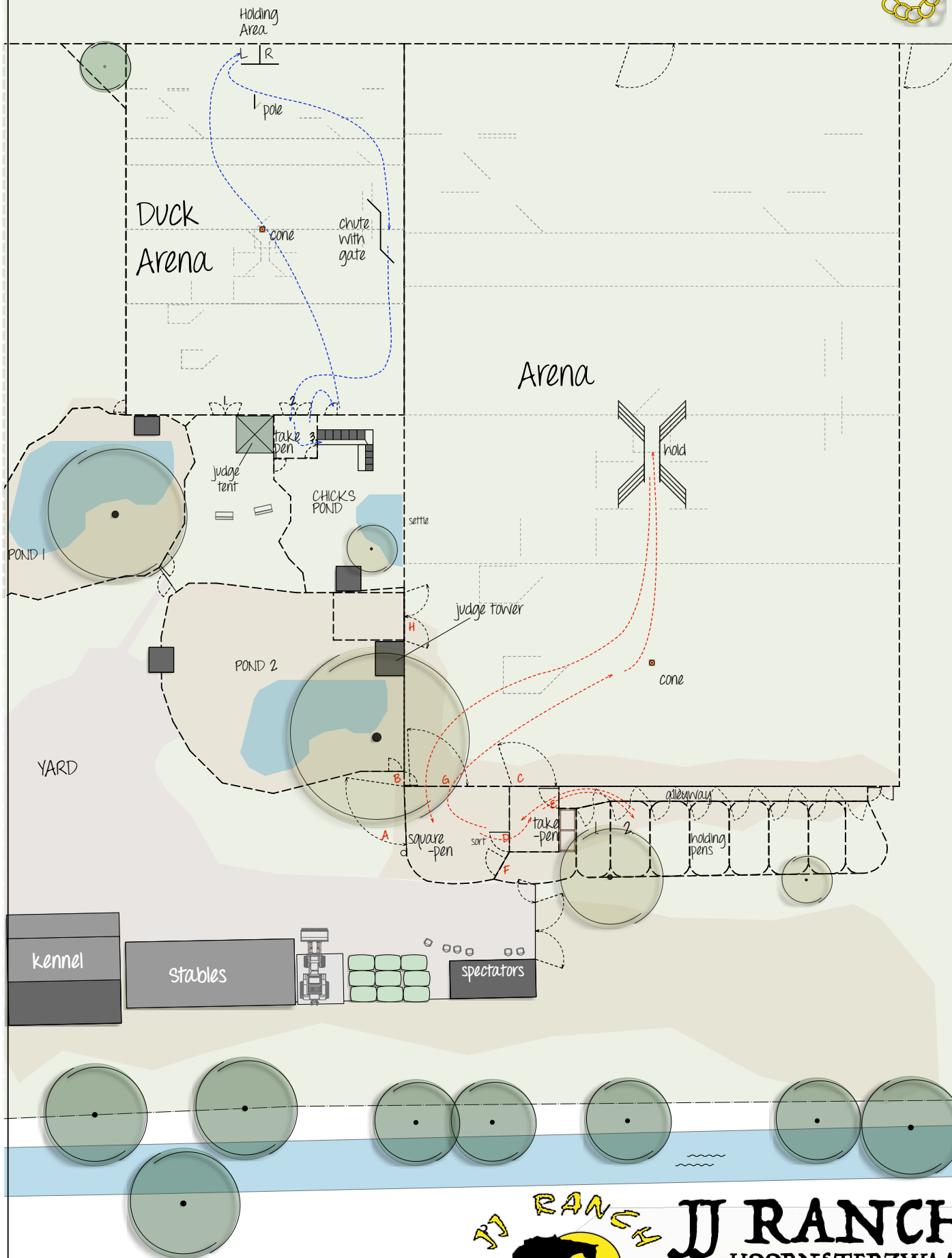
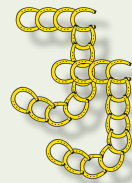
Size of chute: entrance 6 ft. Exit 2ft. Length ( not counting the wings) 8 ft

Size of holding area: left side = 6 ft x 4 ft, right side = 6 ft x 4 ft

Opening of the trailer: 2.5 ft

Length of the trailer : 9 ft.







## FARM TRIAL PROGRAM SCORESHEET

Australian Shepherd Club of America®

### OFFICIAL JUDGING SCORESHEET

ENTRY # \_\_\_\_\_

TIME \_\_\_\_\_

OPEN ☐

ADVANCED ☐

AUSSIE \_\_\_\_\_

OTHER BREED \_\_\_\_\_

CATTLE \_\_\_\_\_

SHEEP/GOATS \_\_\_\_\_

DUCKS \_\_\_\_\_

MIXED \_\_\_\_ x \_\_\_\_

Task	Possible Score	Deductions	Points Earned
<b>Ducks</b>			
<b>Pen # 1</b>	<b>5</b>		
Starts when gate opens, ends when ducks settle			
<b>Gather</b>	<b>20</b>		
Starts when dog is sent, ends when ducks reach the topfence			
<b>Specific task #1</b>	<b>20</b>		
Starts after the gather, ends when ducks leave the hold			
<b>Chute</b>	<b>20</b>		
Starts when ducks leave the hold, ends when ducks clear the chute			
<b>Pen # 3</b>	<b>5</b>		
Starts when the ducks have cleared the chute, ends when pengate is closed.			
<b>Sheep</b>			
<b>Sorting</b>	<b>25</b>		
Starts when sorting gate opens, ends after the sort and the sorting gate is closed			
<b>Pen # 3</b>	<b>10</b>		
Starts when the dog leaves the sorting area, ends when the stock is back together			
<b>Specific task # 2</b>	<b>20</b>		
Starts when stock leave the SP, and ends when the stock is back in SP			
<b>Pen # 4</b>	<b>5</b>		
Starts when gate to AW opens, ends when holdingpengate is closed			
<b>Total</b>			
(70% to qualify: minimum score of 91/130) <b>Tie Breaker: __Score on sort, score on gather, score on chute__</b>			<b>Q__ NQ__</b>

COMMENTS: \_\_\_\_\_

Judge's signature \_\_\_\_\_

Date \_\_sept 27 /2023\_\_\_\_\_

Location \_\_\_\_\_Hoorsterzwaag\_\_\_\_\_

# FARMTRIAL SEPTEMBER 27 – JUDGE ANNEKE DE JONG

## COURSE CATTLE

5 head of cattle are set in the square pen. Gates are closed.

### **Penwork 1** (5 points)

Take cows from the square pen to the take pen through gate “D”. Ends when gate “D” is closed and the cows are in the take pen.

### **Penwork 2** (5 points)

Take the cows out into arena through gates “C”. Close the gate once the cows are on the arena and settled on the back fence.

### **Specific task 1** (20 points)

Take some cow food and feed the cows in the feeding tray.

Take dog with you when cattle are eating to the pole at the top.

Advanced handlers can only move to top when all cows are eating. Judge will call okay.

Open handlers can move to top when the first cow starts to eat.

Ends when the handler is with the dog at the top of the arena at the pole.

### **Gather** (20 points)

Pole is set at 150 ft.

Open handlers can move ½ way before sending the dog.

Advanced handlers must remain at the pole.

Ends when the cows are near the pole.

### **Chute work** (20 points) chute in the middle of the arena

Take the cows after the gather to the top of the chute. Push the cows through the chute.

Ends when cows are through the chute.

### **Specific task 2** (20 points)

After the chute take the cattle to the left fence and settle between the judges tower and open handlersline.

### **Penwork 3** (10 points)

Open gates “H” and put the cows in the side pen. Close the gates, then open them again and take the cows out. Ends when gates “H” are closed and the cows are on the arena.

### **Penwork 4** (5 points)

Open gate “G” and let the cows go into the square pen.

Ends when cows are in square pen and gate “G” is closed.

**Sorting (25 points)**

Sort 3 cows to the take pen. The sort is at gate "D"

Advanced handlers 3 marked cows.

Open handlers 1 marked cow, 2 unmarked cows.

Once the 3 correct cows are in the take pen close the gate in between and let the 2 remaining join the 3.

Time ends when the cows are in the take pen and all the gates are closed.

Once you are done, leave your dog in the arena or take it with you on leash and bring the cows to their holding pen, set out the next group for the next competitor.

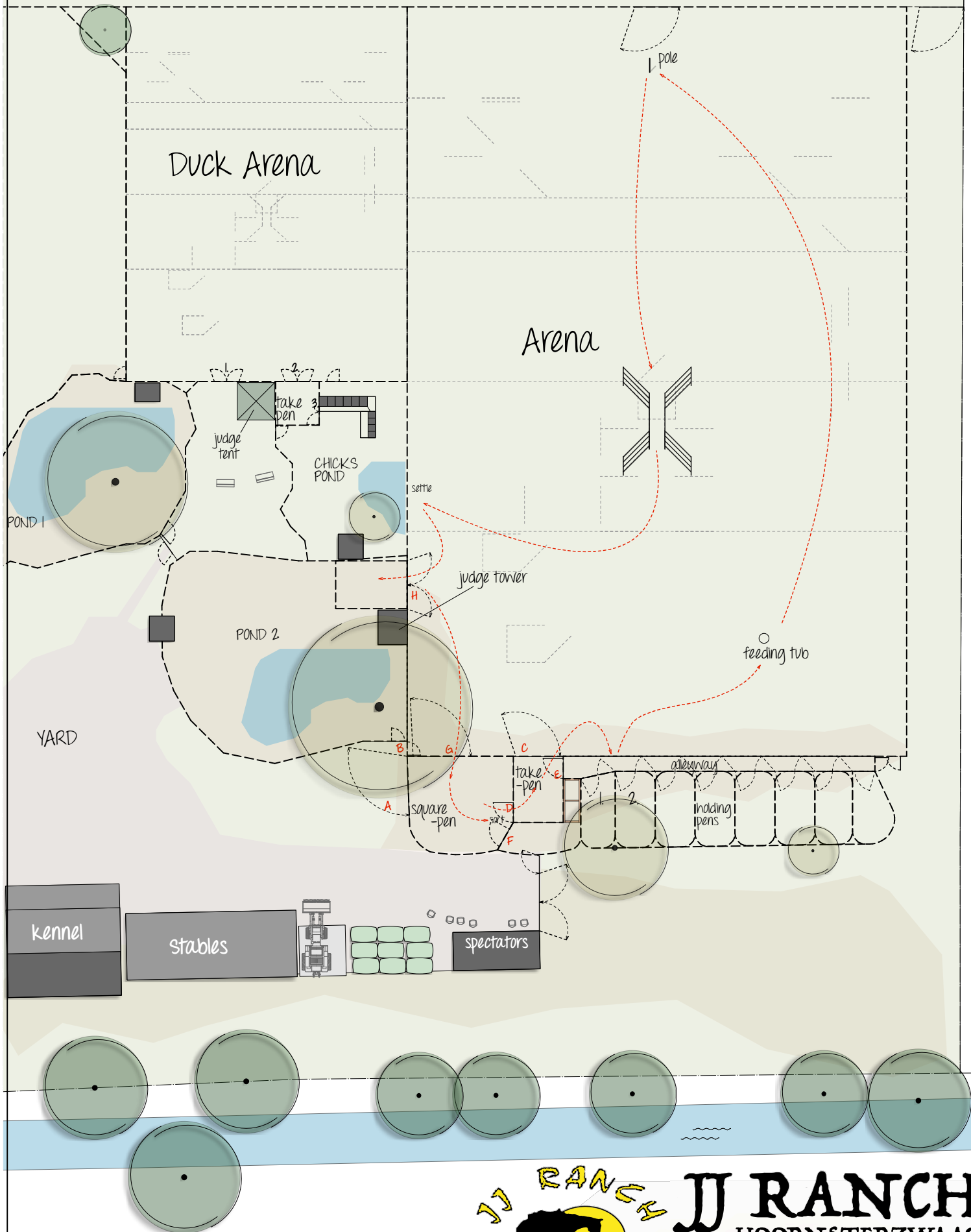
Time allowed 21 minutes.

Warning at 10 minutes and 3 minute warning.

Tie breaker:

- Points on the sort
- Points on specific task 2.
- Points on the chute

Size of chute: Entrance 8ft, exit 4 ft, length = 16 ft Size of Pen 3 : 9 ft x 16 ft. Size HP = 12 x 12 ft Size SP 27 x 33 ft. Size AW : entrance 9 ft wide, exit 3 ft wide. Total length 20ft. Size of holdingpens 1 & 2 : 9 x 15 ft.





**FARM TRIAL PROGRAM SCORESHEET**  
 Australian Shepherd Club of America®  
**OFFICIAL JUDGING SCORESHEET**

ENTRY # \_\_\_\_\_

TIME \_\_\_\_\_

OPEN ☐

ADVANCED ☐

AUSSIE \_\_\_\_\_ OTHER BREED \_\_\_\_\_  
 CATTLE   X   SHEEP/GOATS \_\_\_\_\_ DUCKS \_\_\_\_\_ MIXED \_\_\_\_\_

Task	Possible Score	Deductions	Points Earned
<b># 1 Pen</b> Starts when dog enters the square pen, ends when stock is in take pen.	<b>5</b>		
<b>#2 Pen</b> Starts when gates C are open, ends when stock is in arena and the gate is closed.	<b>5</b>		
<b>Specific task 1</b> Starts when food is put into the tub, ends when the head(s) are in the food bowl.	<b>20</b>		
<b>Gather</b> Starts when the dog is sent, ends when the stock is at the cone.	<b>20</b>		
<b>Chute</b> Starts when the stock come around the cone, ends when the stock is through the chute or handler calls it.	<b>20</b>		
<b>Specific task 2</b> Starts when the stock are through the chute, ends when the stock are settled	<b>20</b>		
<b># 3 Pen</b> Starts when stock are in the left bottom corner, ends when the stock are back in the arena and the gates are closed.	<b>10</b>		
<b># 4 Pen</b> Starts when dog is send for gather on the arena, ends when stock is in the sqaure pen gate is closed.	<b>5</b>		
<b>Sort</b> Starts when sorting gate opens, ends when sorting gate closed, and the stock is joined together.	<b>25</b>		
<b>SCORE</b>			

(70% to qualify: minimum score of 91/130)

Q \_\_\_\_\_ NQ \_\_\_\_\_

**Tie Breaker: 1. Score on sort, 2. Score on task # 2, 3. Score on chute**

COMMENTS: \_\_\_\_\_

Judge's signature \_\_\_\_\_

\_ Date   27 sept /2023  

Location                      Hoornsterzwaag \_\_\_\_\_